

TORRE MELINA
— A GRAN MELIÁ HOTEL —
BARCELONA



HOTEL PRESENTATION



01

Introduction



‘A BOLD NEW VISION OF WHAT
IT MEANS TO LIVE WELL, AWAY
FROM HOME’



Gran Meliá evokes the
essence of Spanish culture:
simple pleasures, connection
with the land, respect for the
things done well and
elegance in every detail.



BARCELONA

Barcelona is one of the most avant-garde cities worldwide. Its history, intense cultural life, architecture and creativity turns it into a reference for global trends.





02

Torre Melina

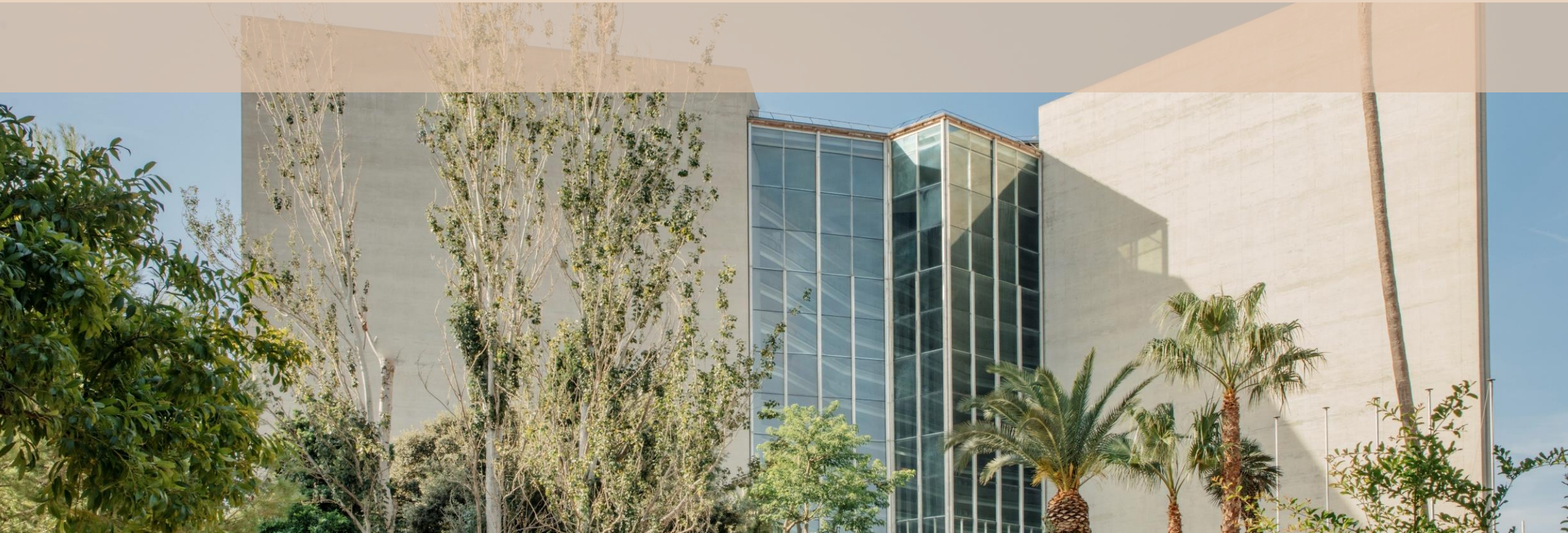
TORRE MELINA

Torre Melina, a name that pays tribute to the past of the hotel and its historic gardens and gives meaning to the reason for the building's existence. Located on the grounds of the ancient Masía Torre Melina, which dates back to the 12th century, the hotel proudly preserves fragments of its iconic modernist gardens, which now stand as a testament to its timeless beauty.



'An urban resort that flies over Barcelona'

Torre Melina defines itself as an urban hotel with a resort feel, as an escape from the hustle and bustle of the city, offering breathtaking views, top-quality facilities and a convenient location in the upper part of Diagonal. Its offer of urban pools, accompanied by the lush vegetation of its private garden, gives the hotel the status of an oasis in the middle of the city.



AN OASIS IN THE MIDDLE OF THE CITY

Torre Melina brings together a 360° vision, including a wide variety of experiences and an excellent service



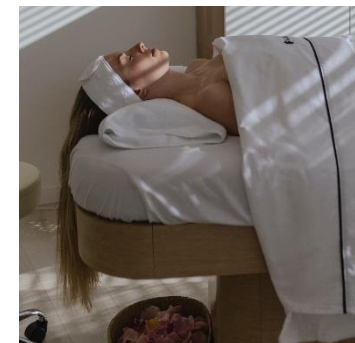
LOCATION

A few meters from Real Club de Polo de Barcelona and the upper area of Pedralbes. Incredible views of the major points of interest in the city.



ROOMS & SUITES

391 contemporary rooms and suites for an exclusive stay full of details.



WELLNESS

Our wellness center and its holistic vision of well-being will provide a wellness experience where body and mind are cared for equally.



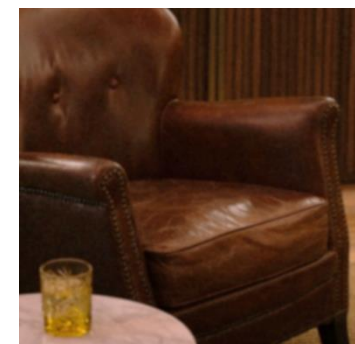
GARDENS & EXTERIOR SPACES

Luxuriant historic gardens that create a fantastic setting for large celebrations



GASTRONOMY

Our gastronomic partners bring creativity and innovation, defining a unique culinary proposal and a new taste in the destination.



REDLEVEL LOUNGE

A reserved space in the hotel Lobby, exclusive for VIP guests and full of personalized attentions.

BARCELONA

MELIÀ
SARRIÀ
BARCELONA

PALAU DE CONGRESSOS
DE CATALUNYA
BARCELONA
MANAGED BY MELIÀ HOTELS INTERNATIONAL

CAMP
NOU

SANTS TRAIN
STATION

TORRE MELINA
— A GRAN MELIÀ HOTEL —
BARCELONA

INNSiDE by Melià
Barcelona Aeropuerto

AIRPORT



INNSiDE by Melià
Barcelona Apolo

COLUMBUS
MONUMENT



RAMBLAS



PLAÇA
CATALUNYA



ME
BARCELONA



CASA
BATLLÓ

LA PEDRERA



SAGRADA
FAMILIA



Hotel Barcelona Condal Mar
AFFILIATED
BY MELIÀ

TORRE
GLORIES



MELIÀ
SKY
BARCELONA

HARBOUR



MONTJUIC



Rooms & Suites



ROOM TYPOLOGIES



391 ROOMS & SUITES

Deluxe Room (147)
Premier Room (124)
Supreme Room (9)

Supreme Room RedLevel (50)
One Bedroom Suite RedLevel (20)
One Bedroom Suite Long Stay RedLevel (27)
One Bedroom Master Suite RedLevel (12)
One Bedroom Presidential Suite RedLevel (1)
One Bedroom Penthouse Suite RedLevel (1)





DELUXE AND PREMIER ROOMS

- 30 sqm size and views to the mountain and the Real Club de Polo de Barcelona
- Equipped with a 42" plasma screen, a work table and a sofa.
- Rooms with two Queens or one King size Bed
- Deluxe Rooms are located from 1st to 5th floor.
- Premier Rooms with views are located from 6th to 9th floor.



SUPREME ROOMS

- 40 sqm size and views to the mountain & the city
- Equipped with a 42" plasma screen, a work table and a sofa.
- King size bed.
- Supreme Rooms are located from 1st to 5th floor, at the corner of the building.
- Supreme Rooms with views are located from 6th to 9th floor
- **Red Level Attribute available:** Exclusive access to the Red Level Private Lounge and extra benefits.

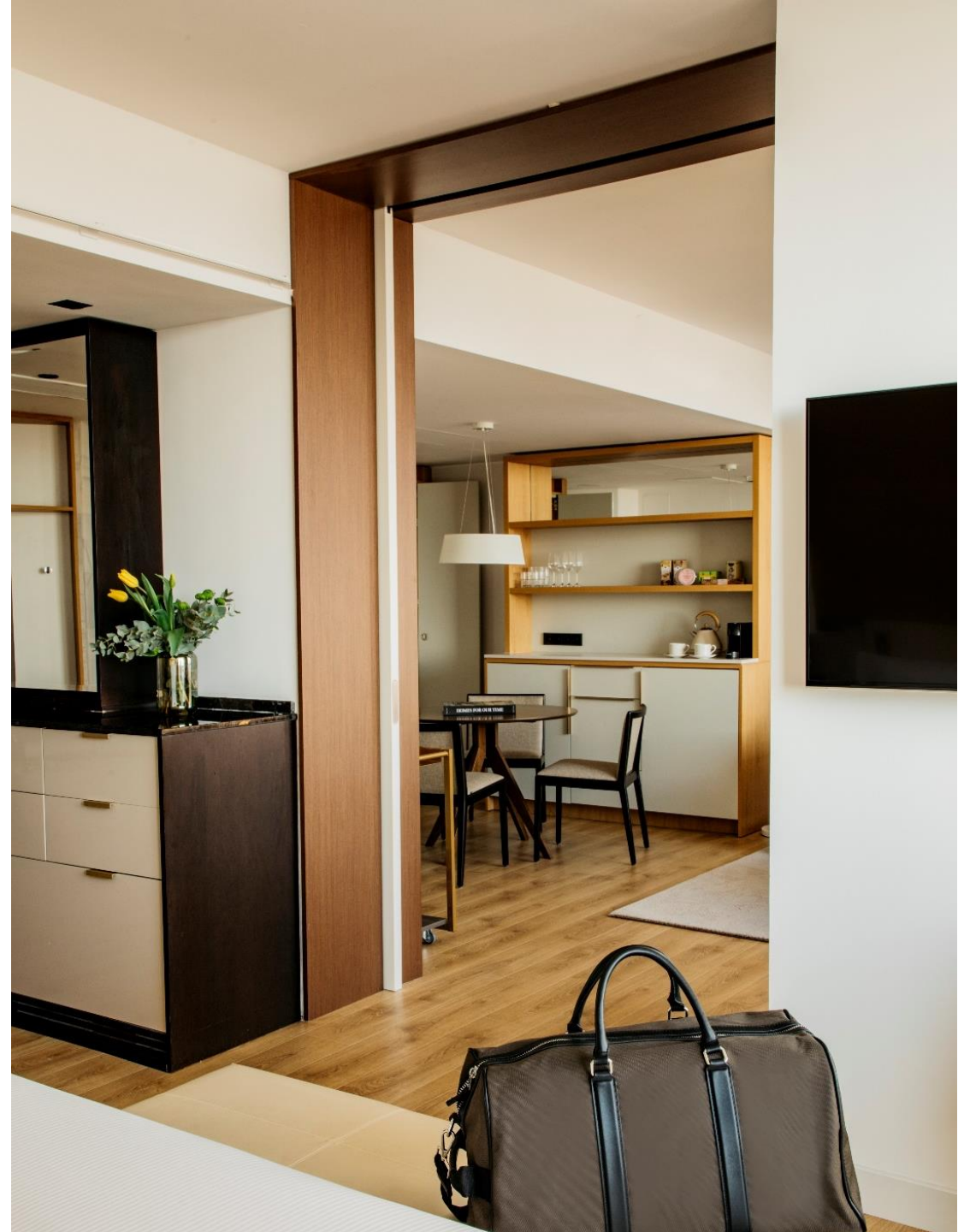


ONE BEDROOM
REDLEVEL SUITE



ONE BEDROOM REDLEVEL SUITE

- 60 sqm size and views to the city.
- Spacious separated living room, two bathrooms and a connected bedroom.
- Equipped with a 50" plasma screen , a work table, a sofa bed and a coffee maker.
- Located from the 14th to 15th floor.
- **Red Level Attribute available:** Exclusive access to the Red Level Private Lounge and extra benefits.
- **A long stay service is available:** equipped with a kitchenette to enhance your accommodation (Located from 10th to 12th floor).



ONE BEDROOM *REDLEVEL* MASTER SUITE

- 100 sqm size and views to the Real Club de Polo de Barcelona and the city.
- Spacious separate living room, two bathrooms and foyer.
- Equipped with a 50" plasma screen , a work table, a sofa bed and a coffee maker.
- Located from 1st to 12th floor.
- **Red Level Attribute:** Exclusive access to the Red Level Private Lounge. & benefits.



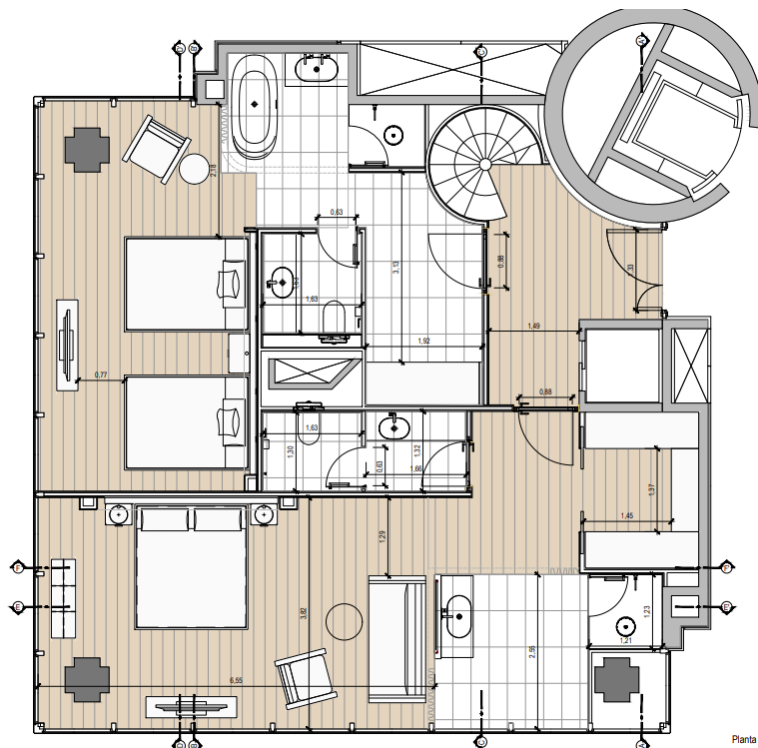
ONE BEDROOM *REDLEVEL* PRESIDENTIAL SUITE

- 116 sqm size and views to the city.
- Spacious separate living room, two bathrooms and foyer.
- Equipped with a 50" plasma screen , a work table, a sofa bed and a coffee maker.
- Located on 14th floor.
- **Red Level Attribute:** Exclusive access to the Red Level Private Lounge & extra benefits.



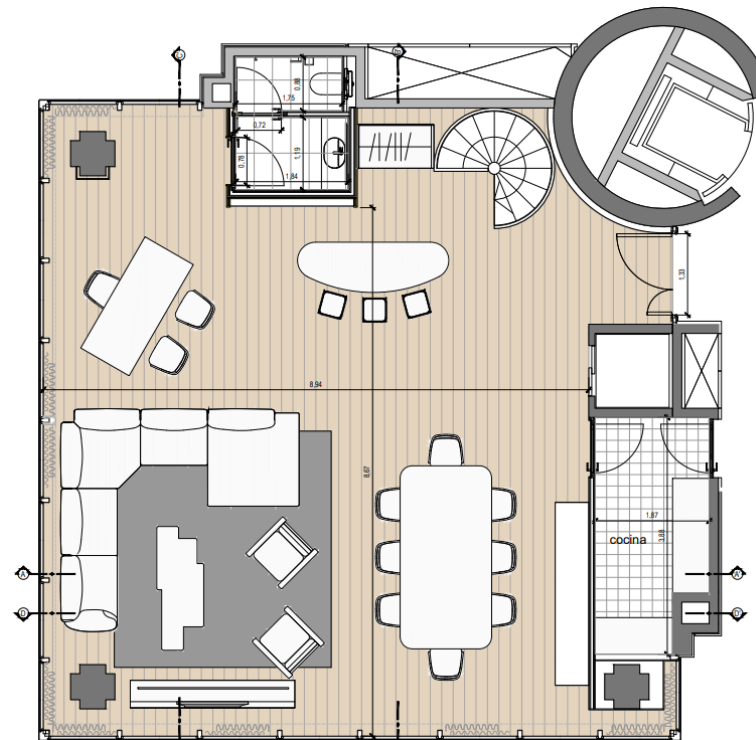
THE ROYAL PENTHOUSE SUITE REDLEVEL

A spectacular suite of 300m² on 3 floors, located in the highest part of the hotel and designed to offer a stay full of exclusivity, comfort and privacy. It's composed by two bedrooms, dining room, living room and terrace with private pool.

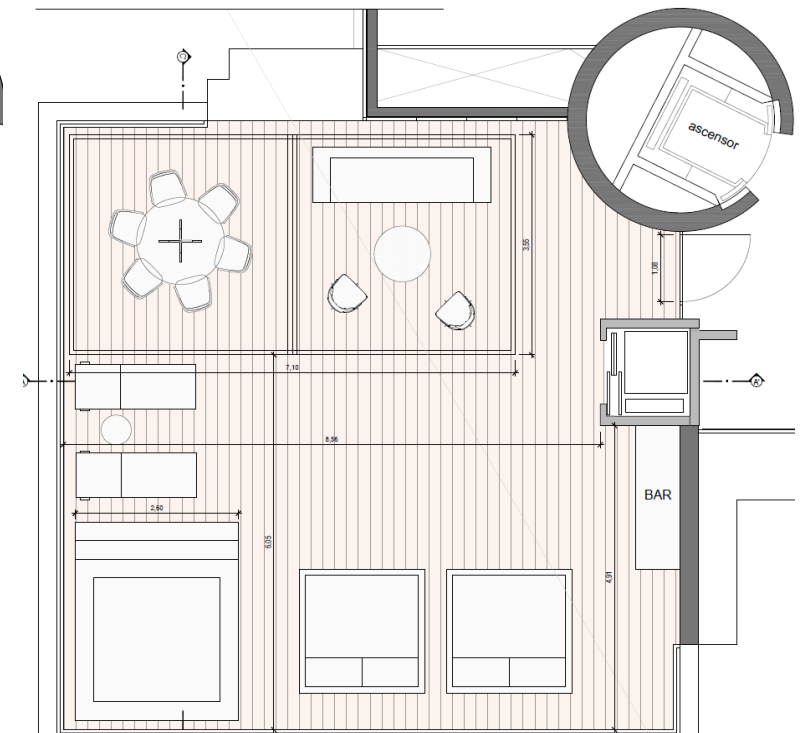


14th FLOOR

Planta



15th FLOOR



16th FLOOR



THE ROYAL PENTHOUSE SUITE
REDLEVEL
14th floor



THE ROYAL PENTHOUSE SUITE
REDLEVEL
15th floor





THE ROYAL
PENTHOUSE SUITE
REDLEVEL
16th floor



RED LEVEL *Lounge*



The most exclusive meeting point of Torre Melina

Only for RedLevel members, this sophisticated lounge offers the chance to relax in front of the hotel's spectacular gardens, hold a meeting, work in your business area, or simply enjoy a coffee, tea, mixed drink, or premium drink, as well as sweet or savory snacks and the best tapas. Always, in the most distinguished and relaxed atmosphere.



F&B

F&B SPACES



Lobby

ERRE Barcelona
Signature Restaurant
by Iñigo Urrechu

L'AMARANTA
Restaurant
Lobby Bar
Breakfast

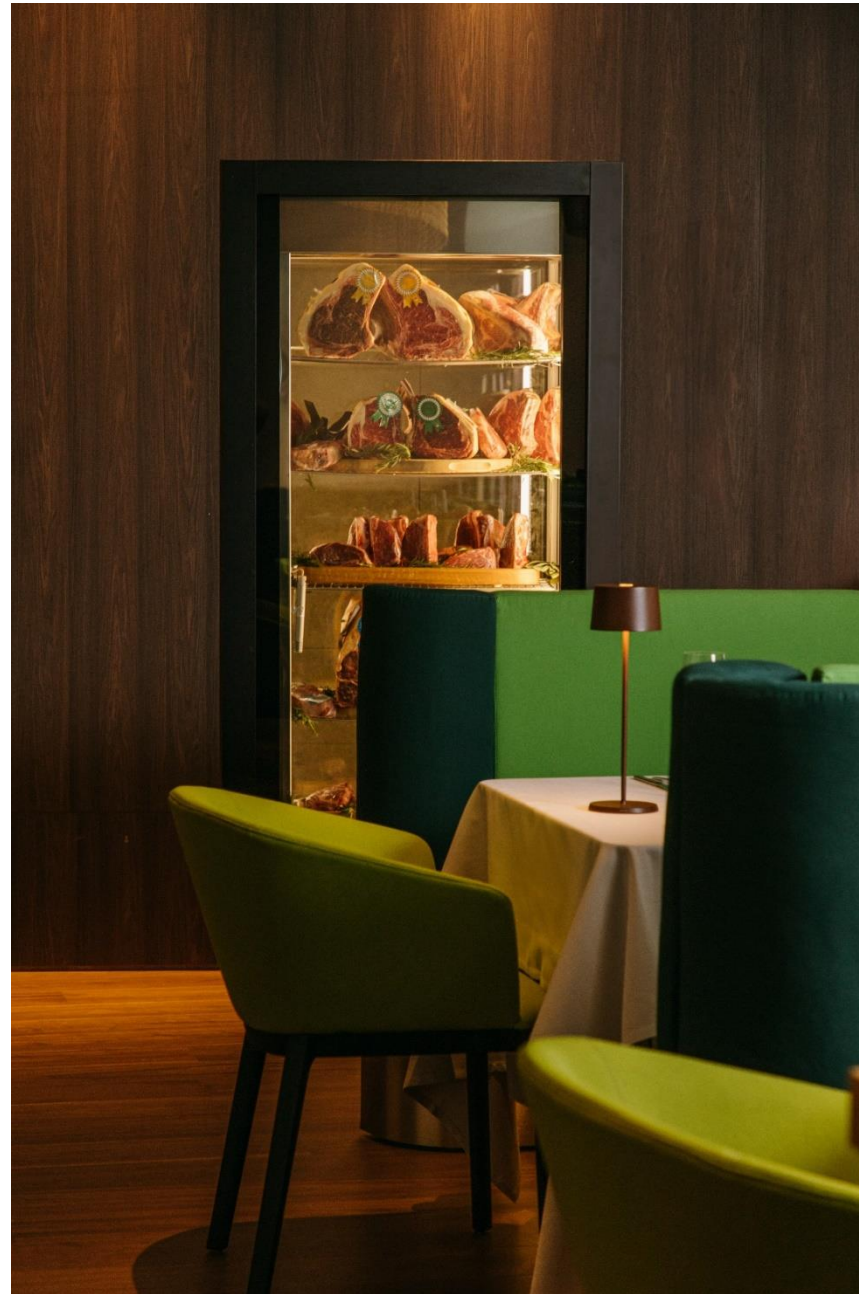
Pool Area 1

BESO PEDRALBES

Pool Area 2

POOL BAR TERRASSE
Pool Restaurant

THE ART OF GRILLING



BARCELONA
ERRE
& URRECHU

Signature restaurant

- LOBBY AREA -

Led by grill master Íñigo Urrechú, ERRE is a steakhouse that pays the utmost care when choosing raw materials, giving priority to seasonal organic vegetables, wild fish and the most outstanding national and international meats.

In addition, ERRE offers the most select advice from our star sommelier, who will recommend the perfect pairing among more than 200 wines

L'AMARANTA

Bar · Restaurant · Breakfast
- LOBBY AREA -

The renovation of the lobby will offer these three elegant spaces bathed in light, ideal for admiring the hotel's gardens while savoring an uninterrupted gastronomic offer.

Enjoy breakfast, lunch or dinner in front of the beautiful nature that surrounds Torre Melina.





BESO

PEDRALBES

- POOL 1 -

Let yourself be surrounded by good music and the best atmosphere of Barcelona.

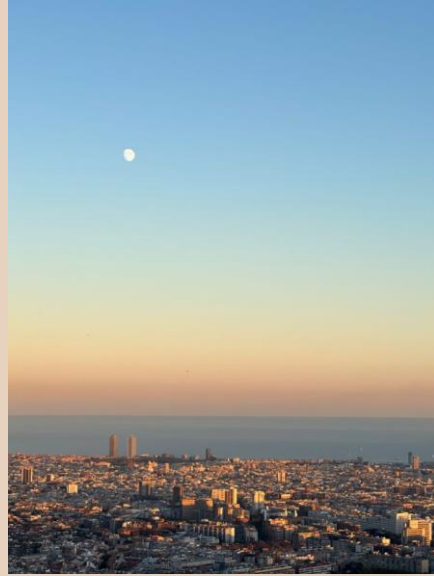
Let the day turn into night .A gastronomic proposal based on Basque-Mediterranean cuisine that seeks inspiration in the sea and in the fire, the embrace between north and south, between land and sea. Something magical, tasty and unique.







ROOFTOP



The top floor of Torre Melina Gran Meliá has become the Rooftop of reference in Barcelona to celebrate private events & key personal celebrations with the best views of Barcelona's skyline.



*“SIGNATURE
COCKTAILS
WITH A
CURATED
SELECTION
OF MUSIC”*









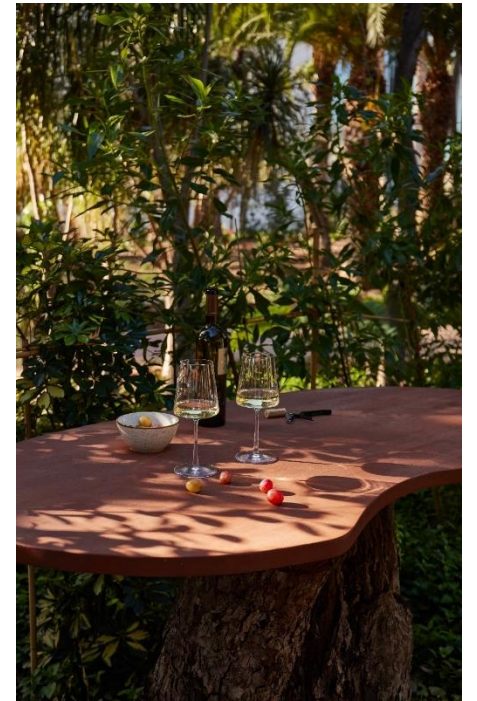
Gardens

In the bustle of the majestic city of Barcelona, being surrounded by nature, silence and tranquility can become the closest idea of paradise on earth.

Gardens and lush green areas designed by Josep Fontserè i Mestre, and inspired by the large romantic gardens of the 19th century, make up an idyllic place to disconnect in the noble neighborhood of Pedralbes.

The impressive private gardens surrounding the Palau de Congressos de Catalunya and Torre Melina Gran Meliá have become a landmark in Barcelona, with 25,000 m² of gardens, ideal for taking a break and relaxing between meetings.

This lush green area houses several rooms for all kinds of events, as well as two spectacular outdoor swimming pools, a wellness center and a lake.





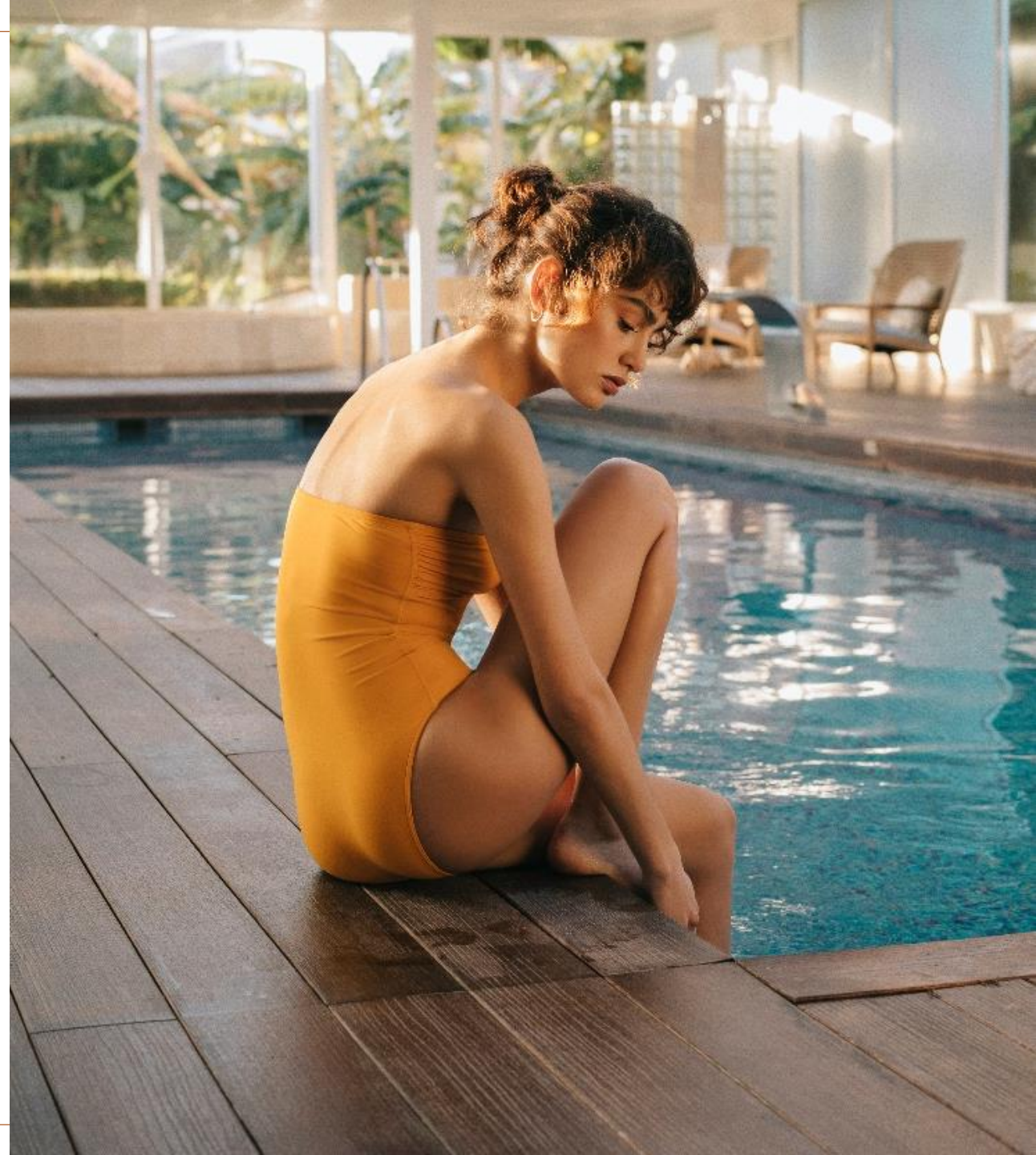
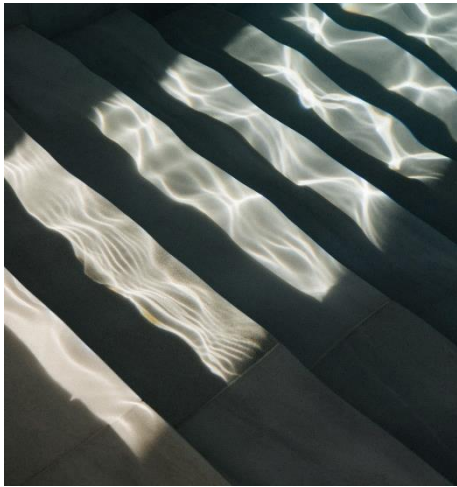
Wellness



BEAUTY & WELLNESS

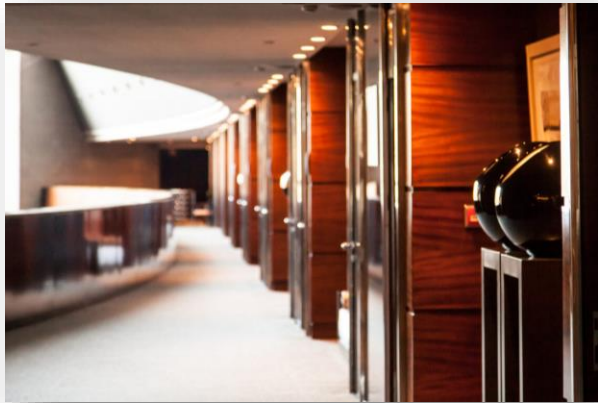
A wide variety of beauty rituals to stimulate your body and spirit; Torre Melina provides a unique and incomparable wellness experience to connect with yourself.

“The best massages of the world by authentic Thai Therapists”



TORRE MELINA MEETING ROOMS

The hotel counts with 17 meeting rooms, all in one level. With capacity for up to 850 people, all spaces have natural day light and are ideal for meetings, presentations and business conferences





PALAU DE CONGRESSOS DE CATALUNYA BARCELONA

MANAGED BY MELIÀ HOTELS INTERNATIONAL



1. DIAGONAL LEVEL



2. GARDEN LEVEL



**BEAUTY, HARMONY AND
SIMPLICITY**

COMPLEMENTED WITH GREAT FUNCTIONALITY AND
VERSATILITY OF SPACES.

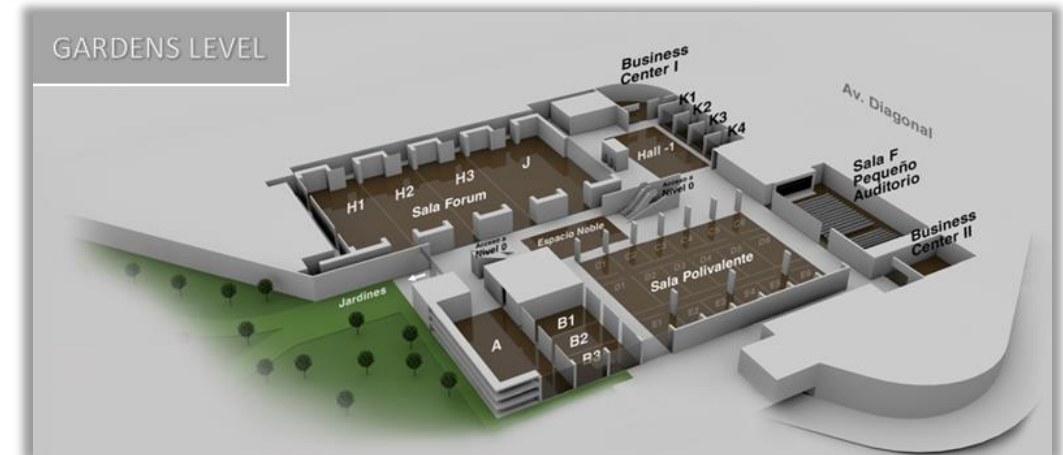


PALAU DE CONGRESSOS DE CATALUNYA

'A SYMBOL OF THE MOST CONTEMPORARY BARCELONA'

It is located on the prestigious Avenida Diagonal in Barcelona, the most important financial and commercial center of the city. The building is surrounded by one of the most beautiful gardens in Barcelona, and its structure is made up of different assembled buildings that highlight the modular design that characterizes it.

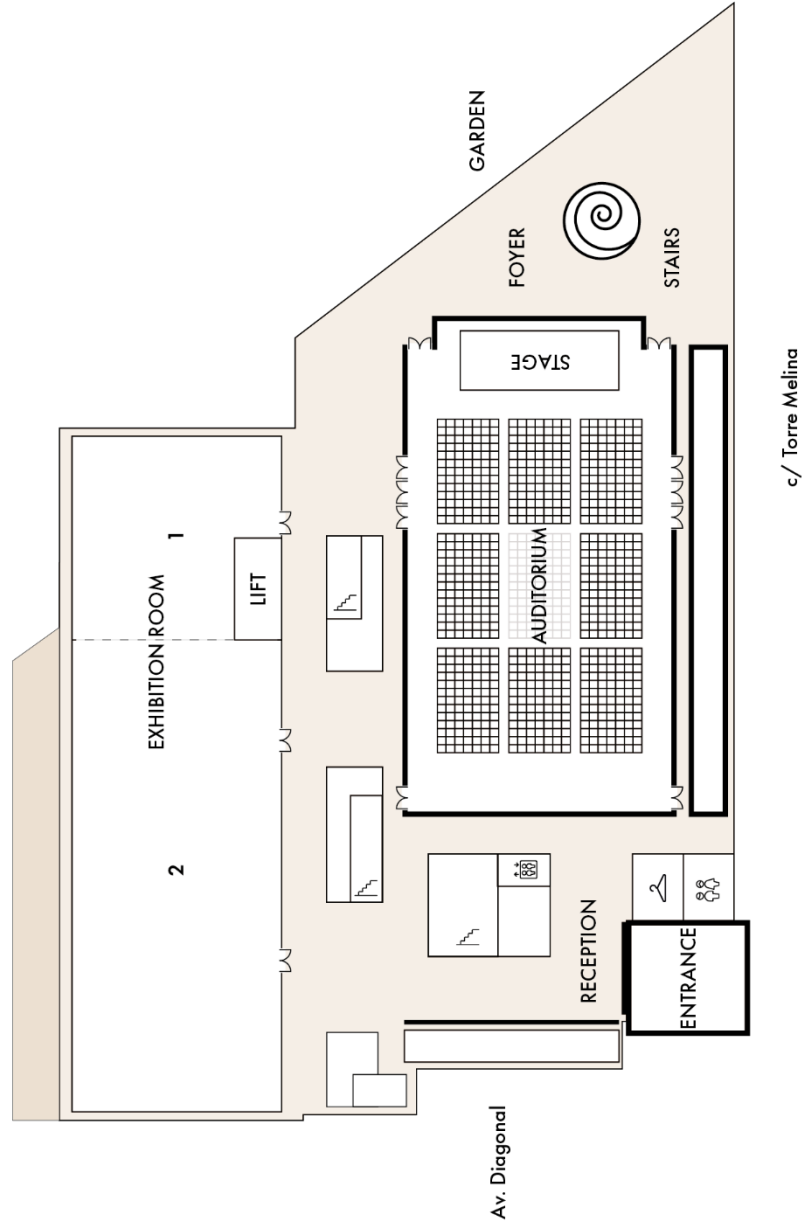
The main protagonist is the natural light that invades its multiple rooms. The beauty, harmony and simplicity of its lines is complemented by the great functionality and versatility of its spaces. It has a total of 39 rooms of different sizes. Its auditorium has a capacity for more than 1897 people and counts on exhibition spaces of more than 4,000m²





01

DIAGONAL LEVEL



DIAGONAL LEVEL

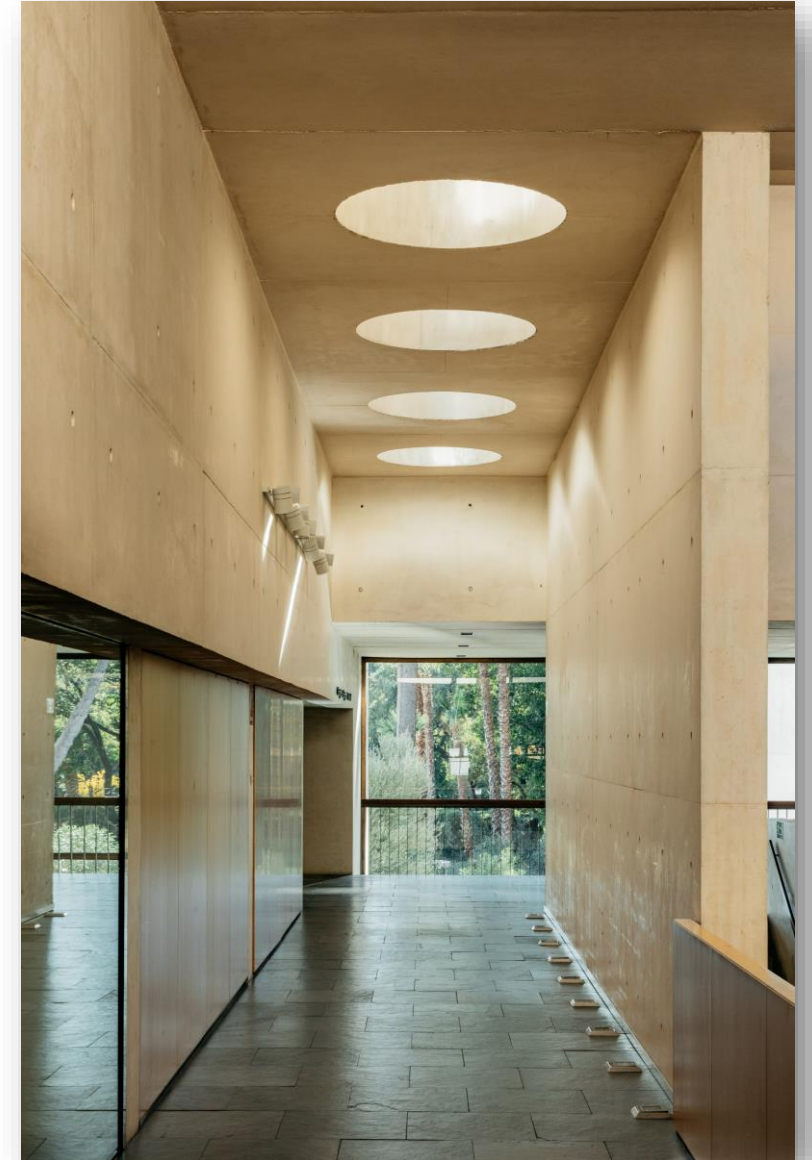
The great entrance to the building, its spectacular Hall, the Exhibition Hall, the Foyer (divided into two floors) and the incomparable Auditorium are the rooms that make up the Diagonal Floor of the Palau de Congressos de Catalunya.

Spacious and elegant spaces of harmonious proportions are integrated into the splendid architecture of the Palau, maintaining its own personality. Stages with different purposes and perfectly equipped with the latest technology are designed to facilitate the celebration and success of all kinds of national and international events.



2.1 ENTRANCE AND MAIN HALL

The main access to the Palau de Congressos de Catalunya is found at Diagonal Street. A spectacular Hall of wide dimensions and great luminosity is the best way to welcome all the participants of the multiple acts and events that take place. It has a reception for events and a large cloakroom.





2.2 FOYER





2.3 EXPO ROOM





2.3 EXPO ROOM





2.3 EXPO ROOM

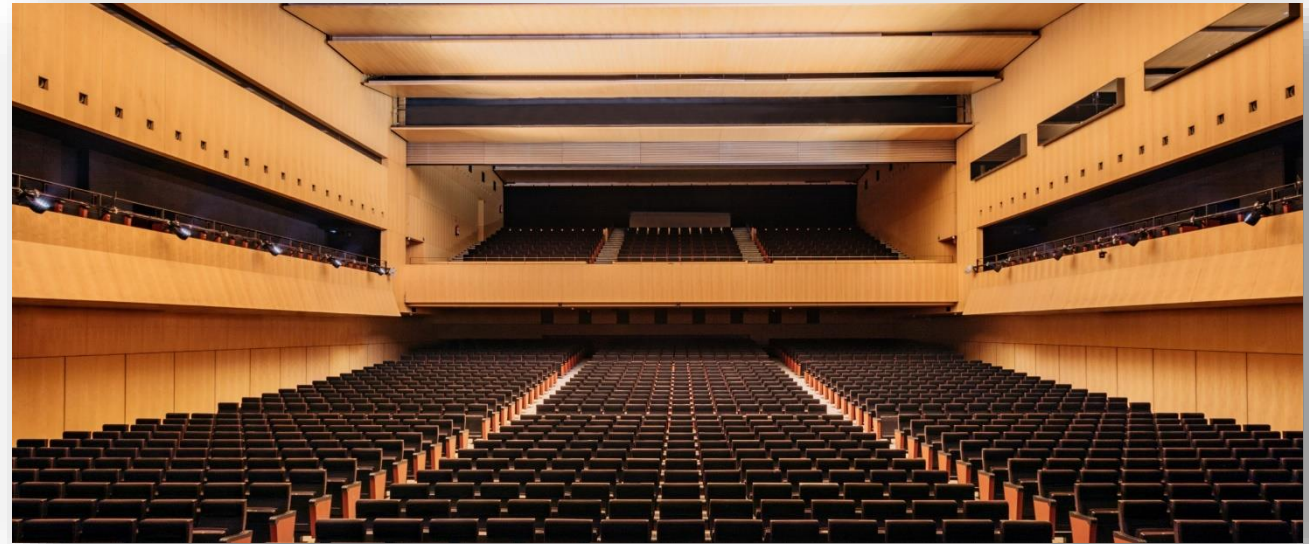




2.4 AUDITORIUM

The Auditorium has capacity for 1897 people, state-of-the-art audiovisual equipment, as well as a large stage that can be accessed by a ramp or from both sides.

AUDITORIUM	PLATEA	AMPHITHEATRE	BOXES
THEATRE	1369 (925 up to curtain)	320	208 (104 each one)
SCHOOL	1369 (925 up to curtain)	320	208 (104 each one)



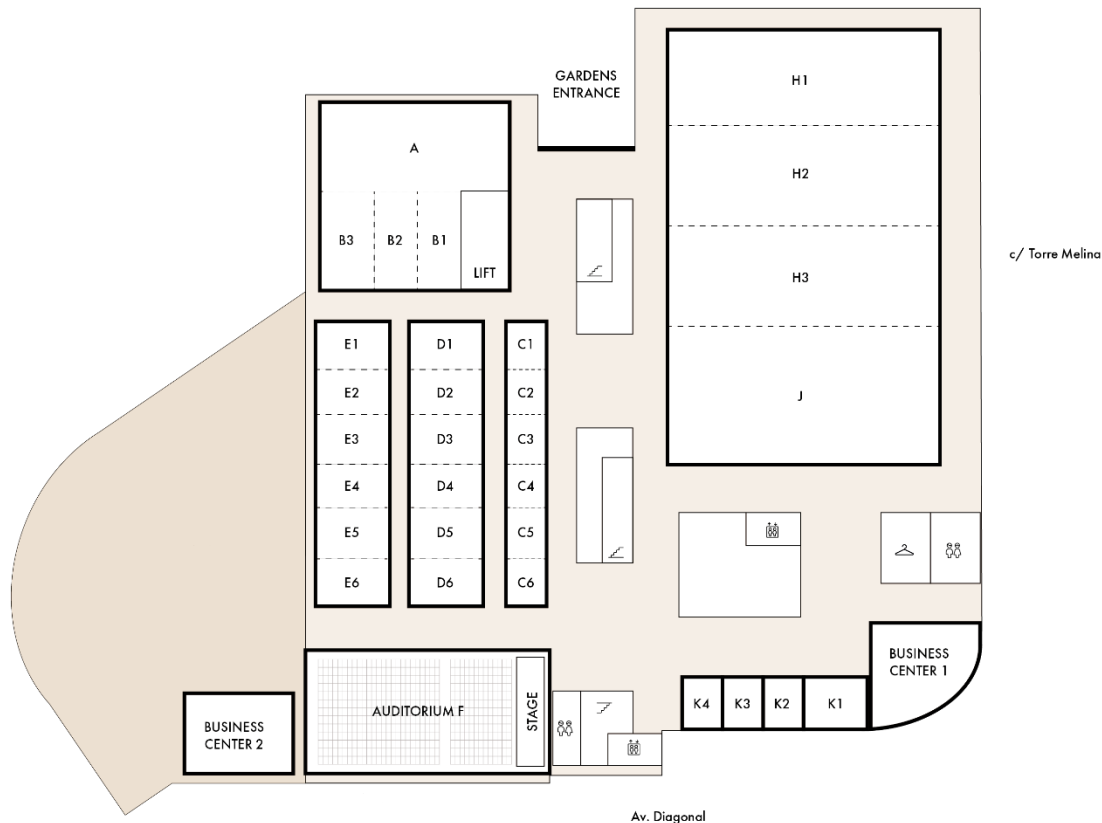


02
GARDEN LEVEL

GARDEN LEVEL

This floor stands out for the functionality and versatility of its large meeting rooms, which can be modularized and adapted according to the needs of the clients. The Multipurpose Room and the Forum Room, which occupy practically the entire floor, stand out.

The Hall is also a relevant space, open and with natural light, ideal for holding exhibitions, cocktail parties and coffee breaks. Several meeting and conference rooms, as well as two Business Centers, complete the offer.





1. GARDEN LEVEL



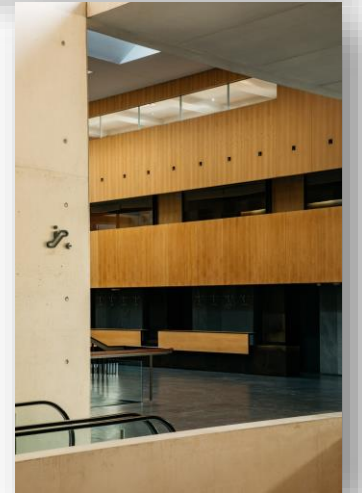
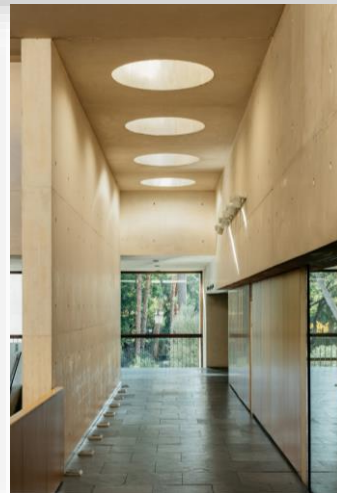


1. GARDEN LEVEL





1. GARDEN LEVEL





3.1.1 GARDEN LOUNGE





**PALAU DE CONGRESSOS
DE CATALUNYA BARCELONA**

MANAGED BY MELIÀ HOTELS INTERNATIONAL

Palau de Congressos de Catalunya
Av. Diagonal, 661 – 671
08028 Barcelona (Espanya)

PALAU DE CONGRESSOS
DE CATALUNYA